

Moisture Compelling Device

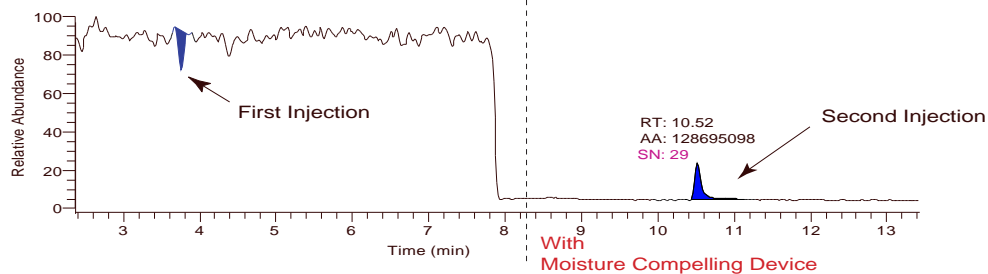
- * Base on aspiration principle, this device control by adjustable air flow converting into optimize vacuum to reduce moisture in Mass Spectrometry Spray Chamber.
- * Traditional vacuum device may not be applied because vacuum pump normal having limited tolerance of high moisture.
- * By reducing relative high flow ESI or APCI spray chamber moisture it can be benefit to reduce analysis noise then enhance signal.
- * This device can be use on Finnigan type Mass Spectrometry, Finnigan LCQ[®], TSQ 7000[®] and TSQ Quantum[®].



500uL/Min, 50% Methanol, Analyzing MW 730.4
ESI Probe with 300°C Capillary Heater.

Two identical loop injection

Total Ion Chromatogram (m/z=500.0-1100.0)



Two identical loop injection

Extracted Single Ion Chromatogram (m/z=730.3-730.5)

